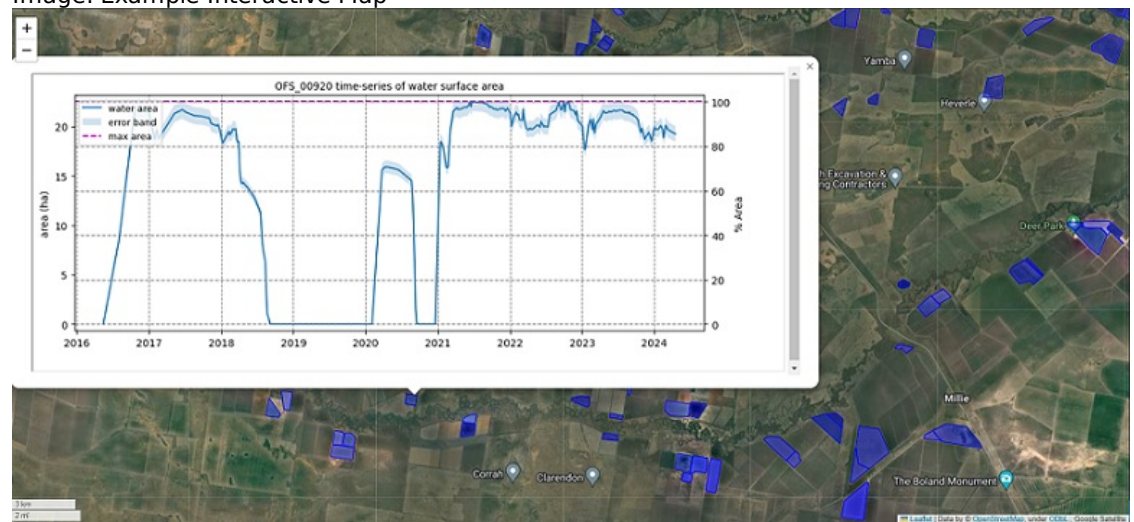


## Abstract

The link points to a GitHub repository. This code repository presents an efficient Google Earth Engine (GEE)-based algorithm to mapping water surface area time-series in waterbodies from Landsat and Sentinel-2. Detailed documentation is contained to run the tool on a set of input waterbodies. The GitHub repository contains a set of Python scripts to automatically extract time-series of water surface area for a set of input polygons.

*NB: Google Earth Engine project is needed to run this toolkit.*

Image: Example Interactive Map



## Resource locator

[Data Quality Statement](#)

Name: Data Quality Statement

Protocol: WWW:DOWNLOAD-1.0-http--download

Description:

Data quality statement for Earth Observation Water Toolkit

Function: download

[GitHub Repository link to Earth Observation Water Toolkit](#)

Name: GitHub Repository link to Earth Observation Water Toolkit

Protocol: WWW:DOWNLOAD-1.0-http--download

Description:

GitHub Repository link to Earth Observation Water Toolkit

Function: download

[Metadata Statement - Questionnaire.pdf](#)

Name: Metadata Statement - Questionnaire.pdf

Protocol: WWW:DOWNLOAD-1.0-http--download

Description:

Metadata Statement associated with the Earth Observation Water Toolkit.pdf

Function: download

## Unique resource identifier

Code b168d00f-60c9-4c8c-8a7e-7f8bc7ed0f77

## Presentation form

Map digital

## Edition

1.0

## Dataset

English

## language

## Metadata standard

Name	ISO 19115
Edition	2016
Dataset URI	<a href="https://datasets.seed.nsw.gov.au/dataset/b168d00f-60c9-4c8c-8a7e-7f8bc7ed0f77">https://datasets.seed.nsw.gov.au/dataset/b168d00f-60c9-4c8c-8a7e-7f8bc7ed0f77</a>
Purpose	Earth observation Data processing and analytics Scripts
Status	Completed
Spatial representation type	None
Spatial reference system	
Code identifying the spatial reference system	4283
Topic category	

<b>Keyword set</b>	
keyword value	WATER
<b>Originating controlled vocabulary</b>	
Title	ANZLIC Search Words
Reference date	2008-05-16
<b>Geographic location</b>	
West bounding longitude	107.490234
East bounding longitude	157.939453
North bounding latitude	-44.695993
South bounding latitude	-10.633615
NSW Place Name	Australia Wide
<b>Vertical extent information</b>	
Minimum value	-100
Maximum value	2228
<b>Coordinate reference system</b>	
Authority code	urn:ogc:def:cs:EPSG::
Code identifying the coordinate reference system	5711
<b>Temporal extent</b>	
Begin position	1987-01-05
End position	N/A
<b>Dataset reference date</b>	
<b>Resource maintenance</b>	
Maintenance and update frequency	Quarterly
<b>Contact info</b>	
Contact position	Data Broker
Organisation name	NSW Department of Climate Change, Energy, the Environment and Water
Telephone number	131555
Email address	<a href="mailto:data.broker@environment.nsw.gov.au">data.broker@environment.nsw.gov.au</a>
Web address	<a href="https://www.nsw.gov.au/departments-and-agencies/dcceew">https://www.nsw.gov.au/departments-and-agencies/dcceew</a>
Responsible party role	pointOfContact
<b>Limitations on public access</b>	

## Responsible party

Contact position	Data Broker
Organisation name	NSW Department of Climate Change, Energy, the Environment and Water
Telephone number	131555
Email address	<a href="mailto:data.broker@environment.nsw.gov.au">data.broker@environment.nsw.gov.au</a>
Web address	<a href="https://www.nsw.gov.au/departments-and-agencies/dcceew">https://www.nsw.gov.au/departments-and-agencies/dcceew</a>
Responsible party role	pointOfContact

## Metadata point of contact

Contact position	Data Broker
Organisation name	NSW Department of Climate Change, Energy, the Environment and Water
Telephone number	131555
Email address	<a href="mailto:data.broker@environment.nsw.gov.au">data.broker@environment.nsw.gov.au</a>
Web address	<a href="https://www.nsw.gov.au/departments-and-agencies/dcceew">https://www.nsw.gov.au/departments-and-agencies/dcceew</a>
Responsible party role	pointOfContact

**Metadata date** 2024-09-19T00:44:12.522625

**Metadata language**